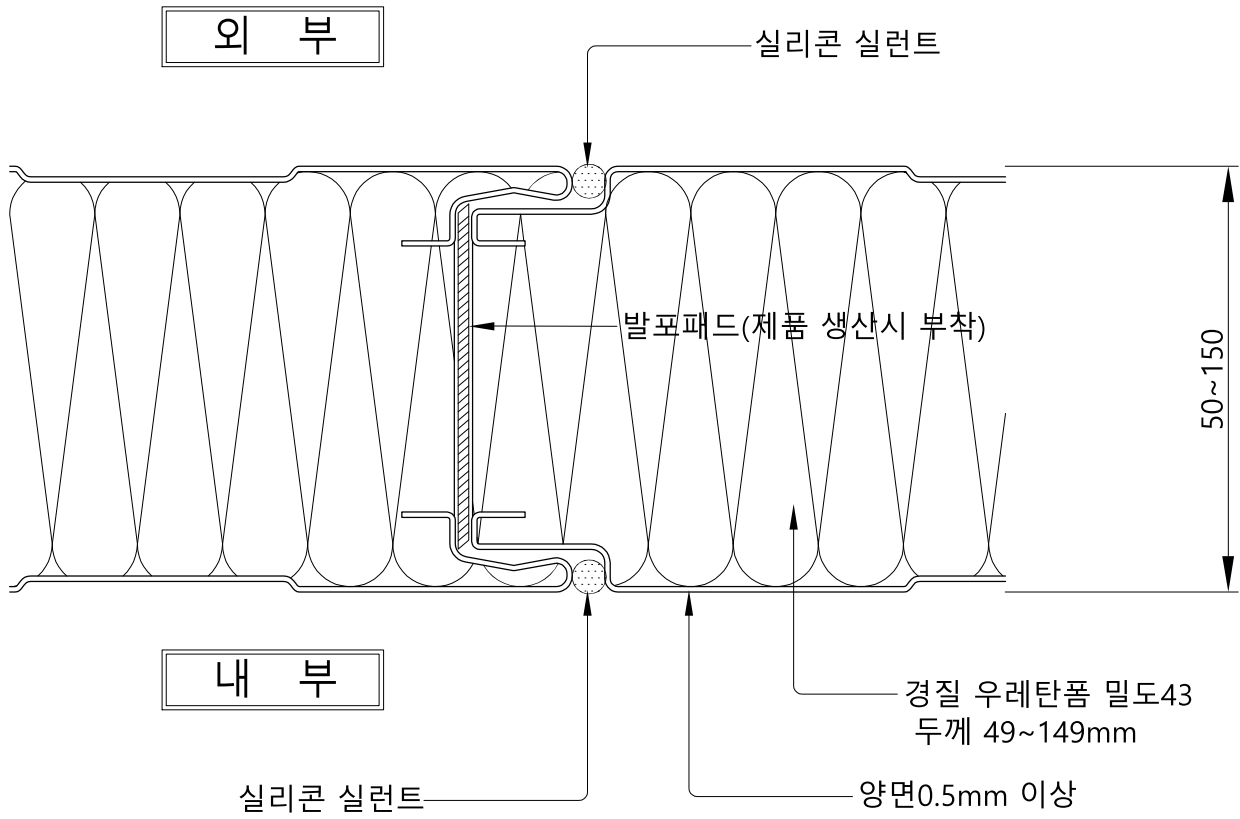
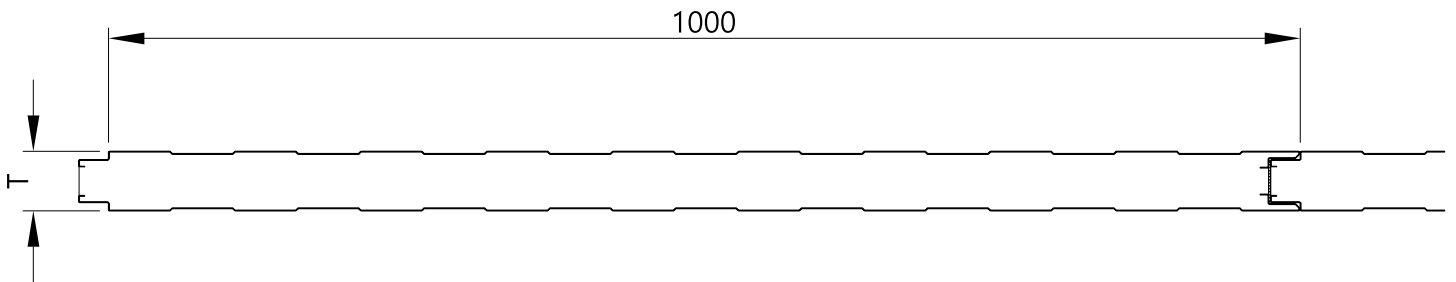


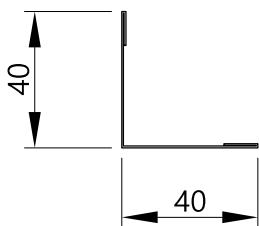
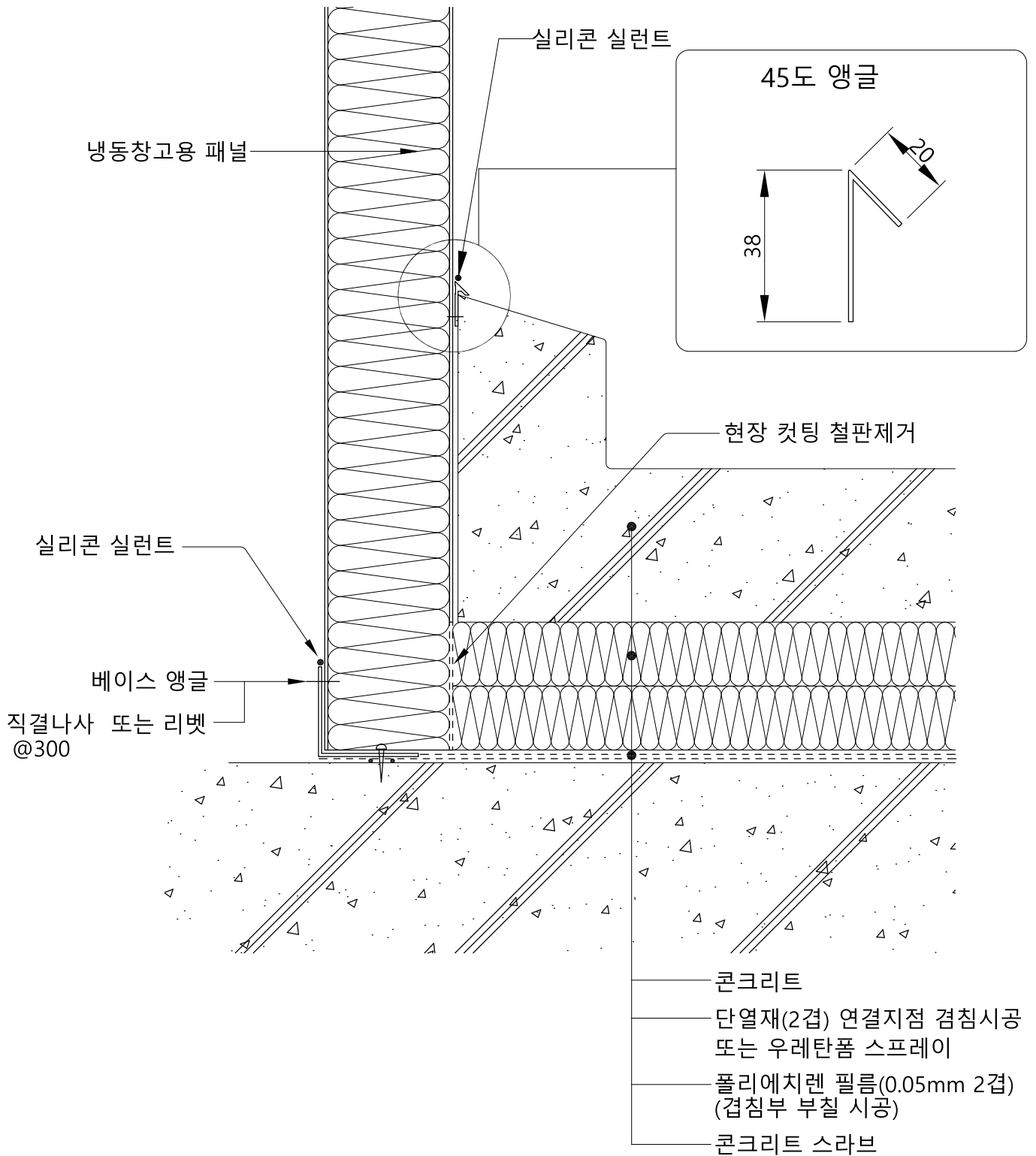
# 냉동패널 조인트 상세도



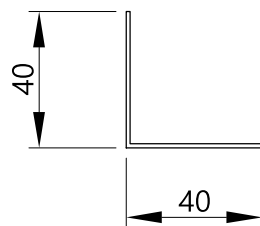
진호기업 준불연 우레탄판넬 사용



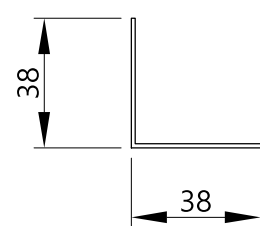
# 냉동고 베이스 상세도(1)



C/S 0.5T 이상

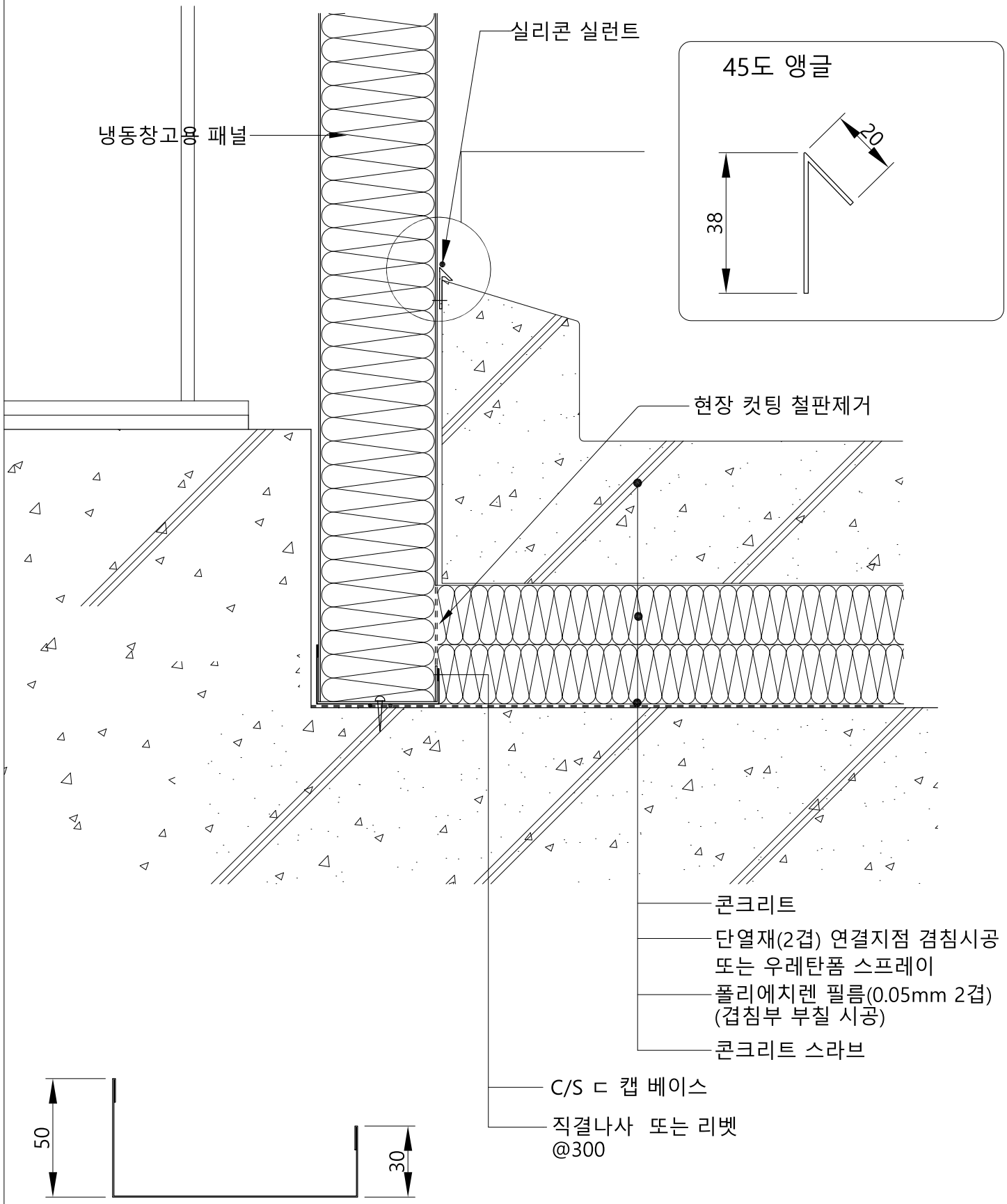


1.0T 이상(스틸도장, 아연도금,STS)



AL앵글(1.2T 또는 1.5T)

# 냉동고 베이스 상세도(2)



냉동창고용 패널

실리콘 실런트

45도 앵글

38

20

현장 커팅 철판제거

콘크리트

단열재(2겹) 연결지점 검침시공

또는 우레탄폼 스프레이

폴리에치렌 필름(0.05mm 2겹)

(검침부 부칠 시공)

콘크리트 슬라브

C/S 캡 베이스

직결나사 또는 리벳

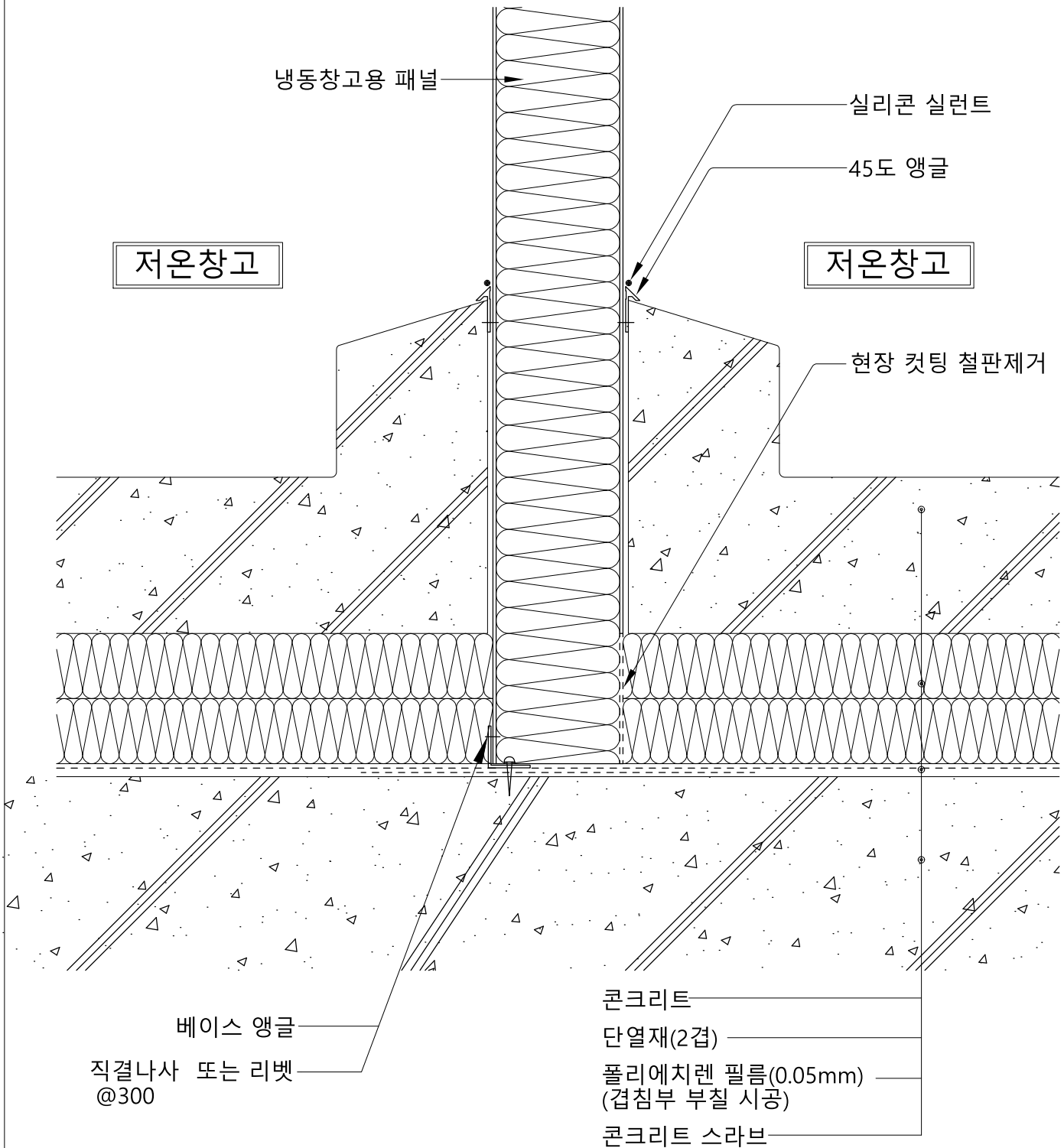
@300

50

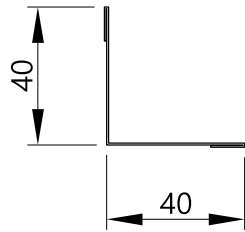
30

C/S 0.5T 이상

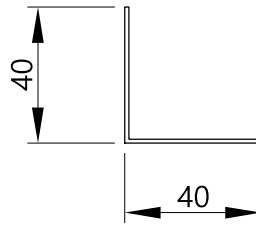
# 냉동고 중간 베이스 상세도



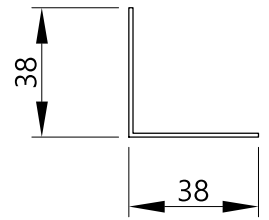
# 냉동패널 코너부위 상세도(1)



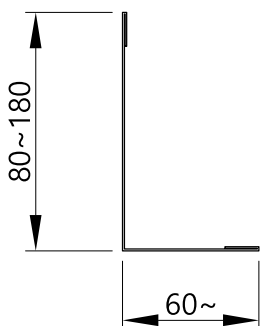
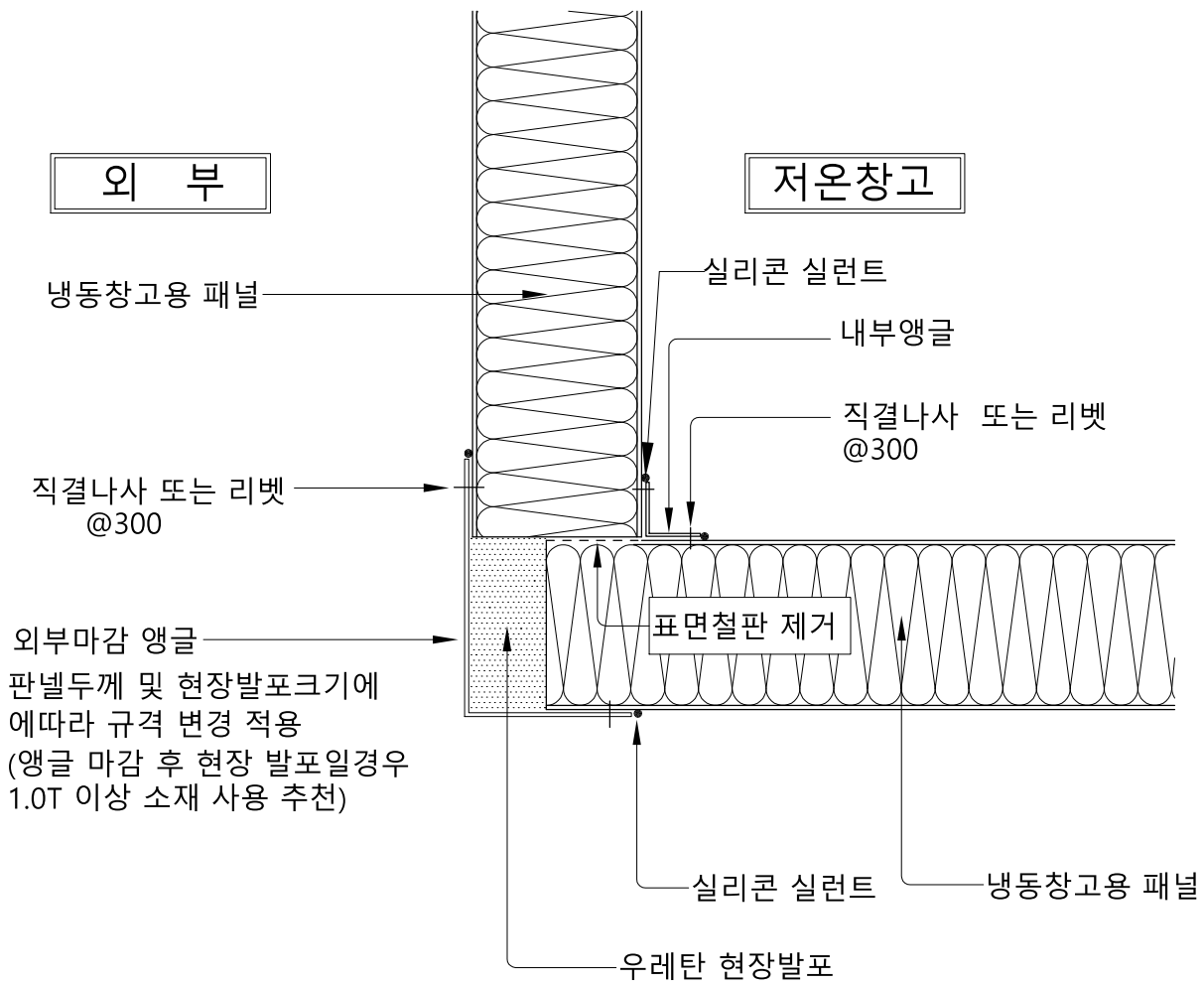
C/S내부앵글 0.5T 이상



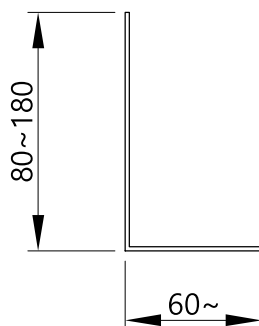
1.0T 이상(스틸도장, 아연도금, STS)



AL앵글(1.2T 또는 1.5T)

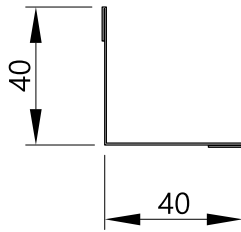


C/S외부앵글 0.5T 이상

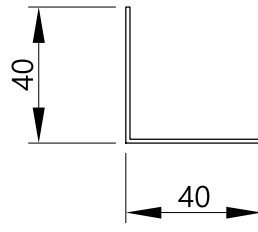


1.0T 이상(스틸도장, 아연도금, STS)

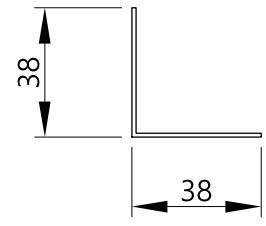
# 냉동패널 코너부위 상세도(2)



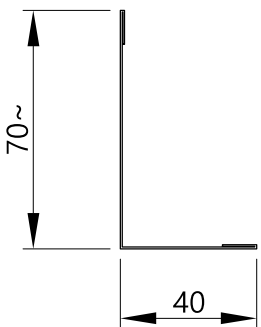
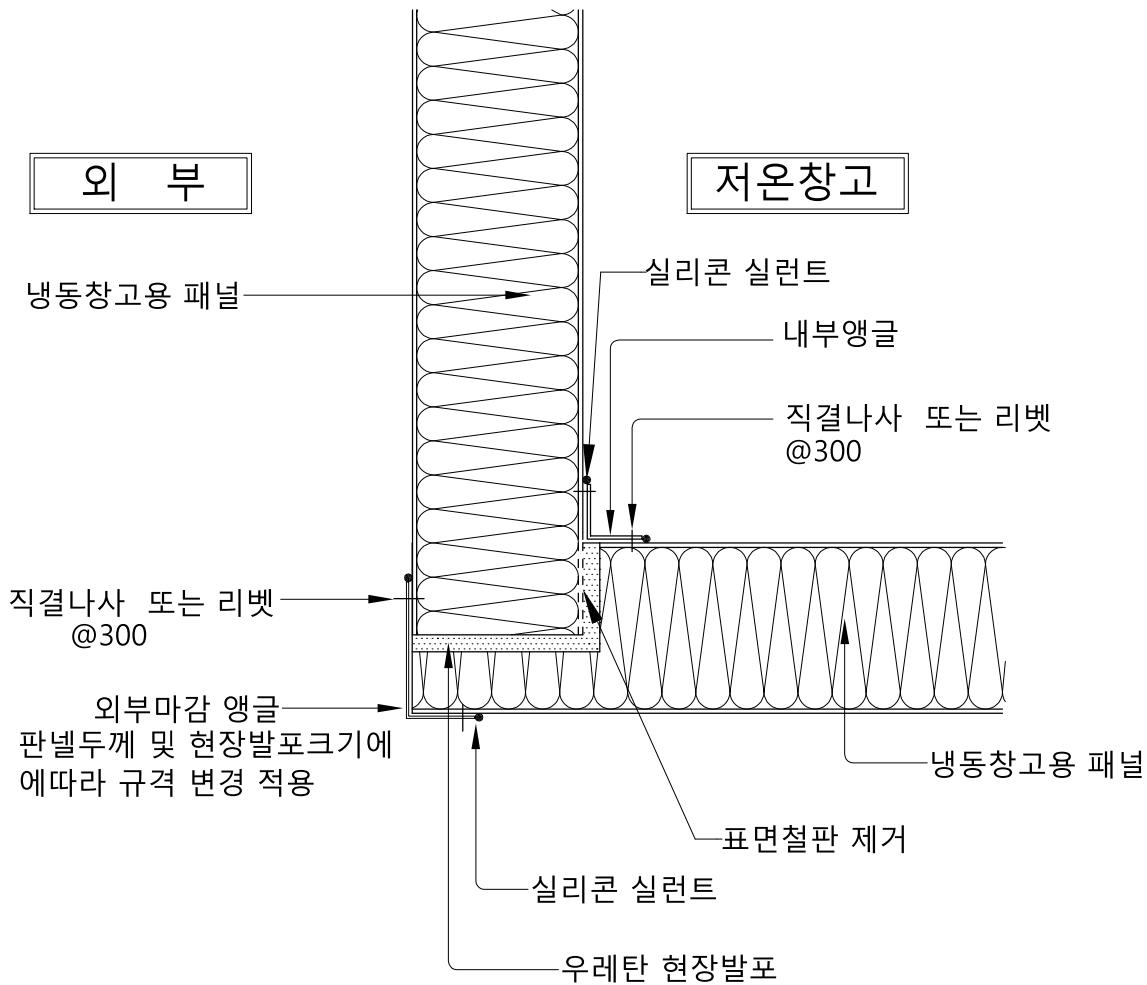
C/S내부앵글 0.5T 이상



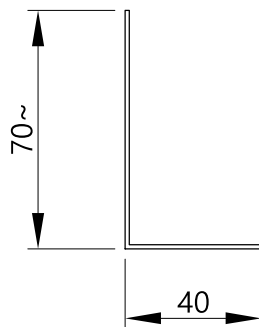
1.0T 이상(스틸도장, 아연도금, STS)



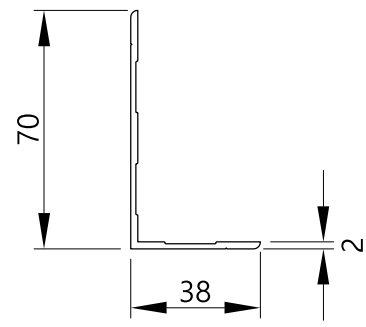
AL앵글(1.2T 또는 1.5T)



C/S외부앵글 0.5T 이상

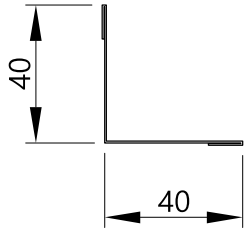


1.0T 이상(스틸도장, 아연도금, STS)

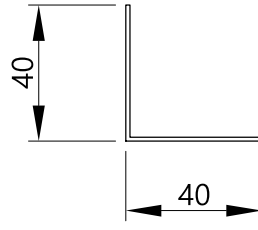


AL 이형앵글

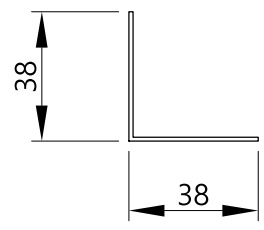
# 냉동패널 코너부위 상세도(3)



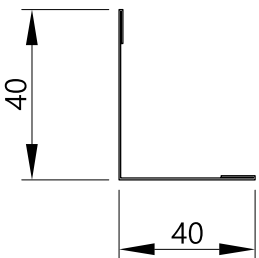
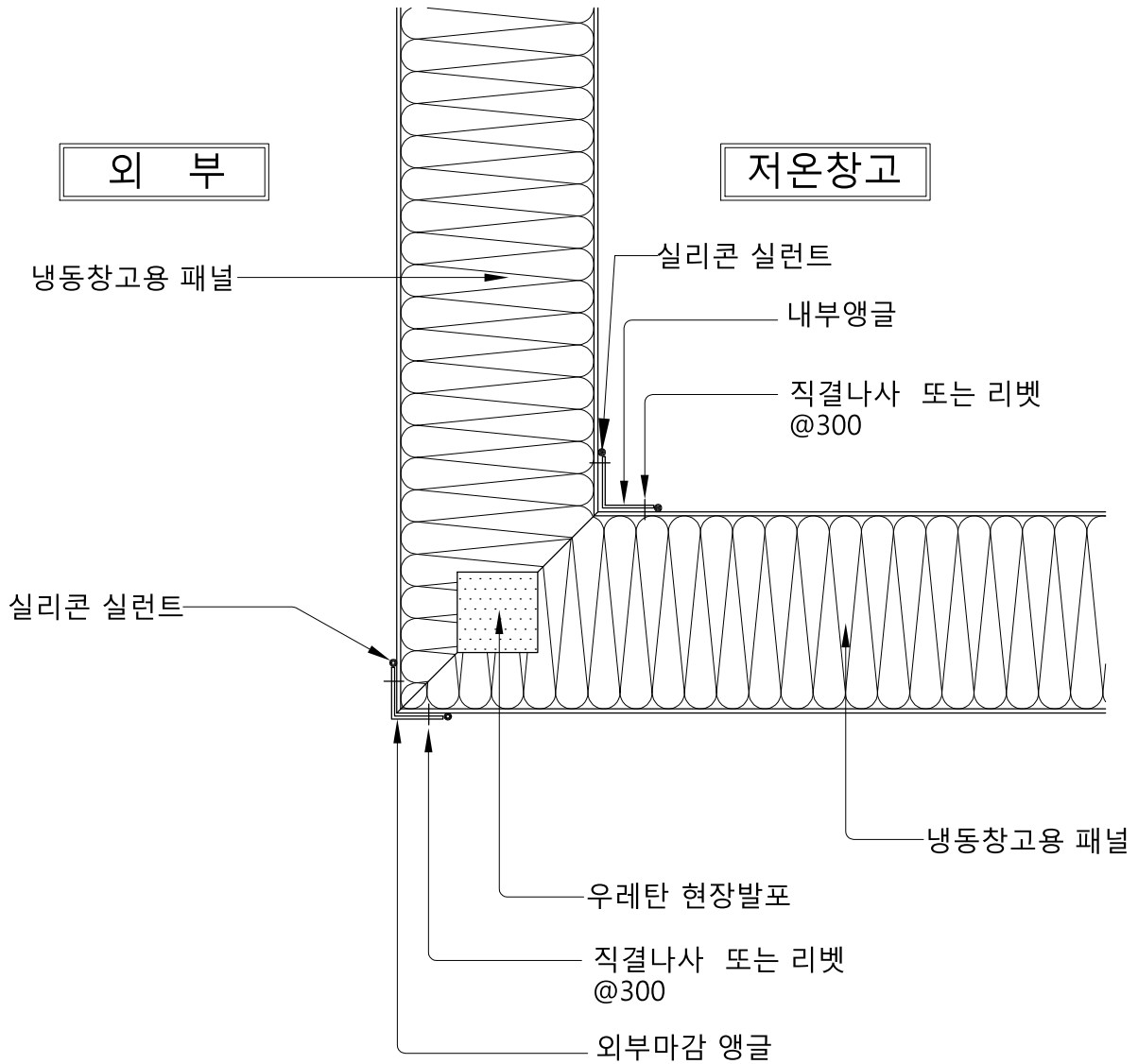
C/S내부앵글 0.5T 이상



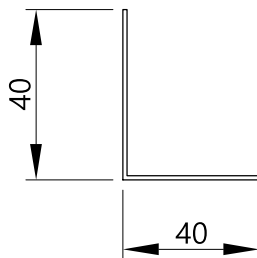
1.0T 이상(스틸도장, 아연도금, STS)



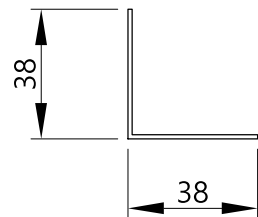
AL앵글(1.2T 또는 1.5T)



C/S외부앵글 0.5T 이상



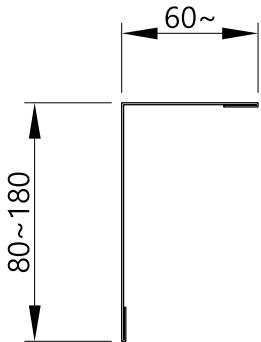
1.0T 이상(스틸도장, 아연도금, STS)



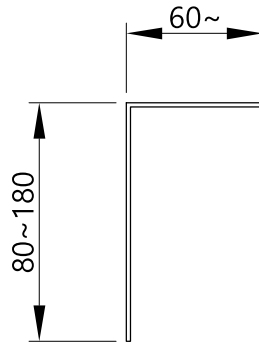
AL앵글(1.2T 또는 1.5T)

# 냉동패널 천정 & 외벽 상세도

C/S외부앵글 0.5T 이상



1.0T 이상(스틸도장, 아연도금, STS)

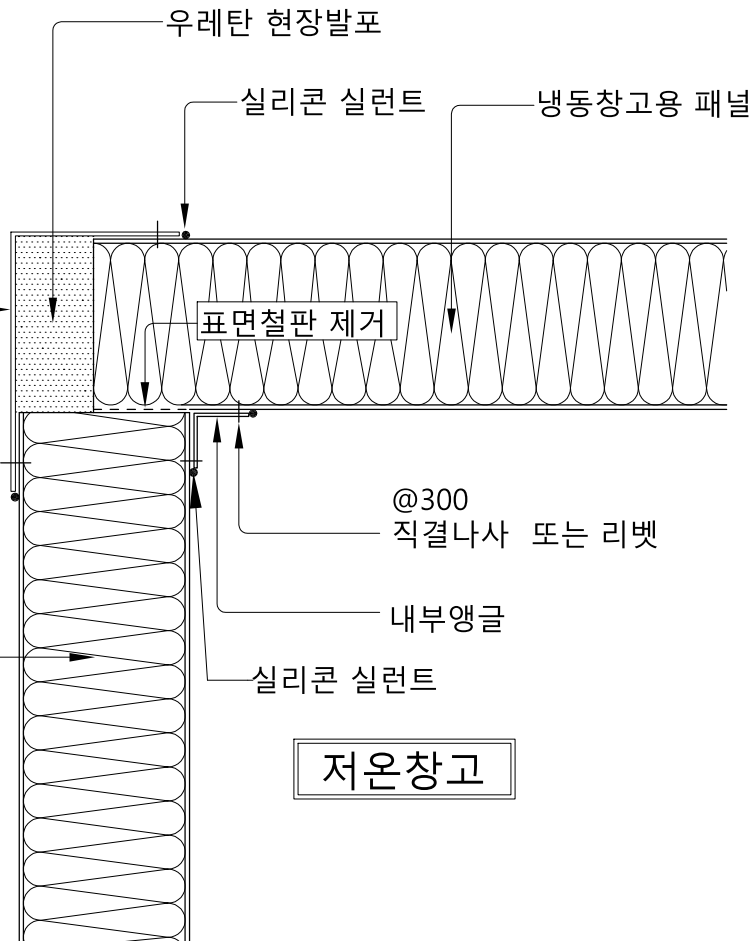


1.0T 이상 소재 사용 추천)  
(앵글 마감 후 현장 발포일경우  
에따라 규격 변경 적용  
판넬두께 및 현장발포크기에  
외부마감 앵글

@300  
직결나사 또는 리벳

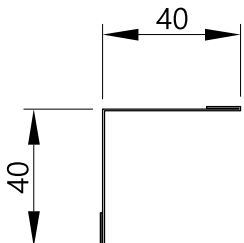
냉동창고용 패널

외 부

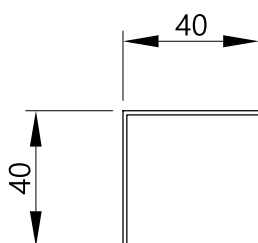


저온창고

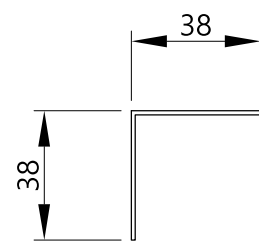
C/S내부앵글 0.5T 이상



1.0T 이상(스틸도장, 아연도금, STS)

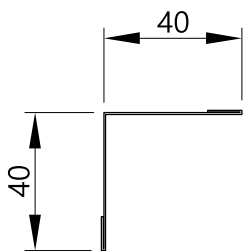
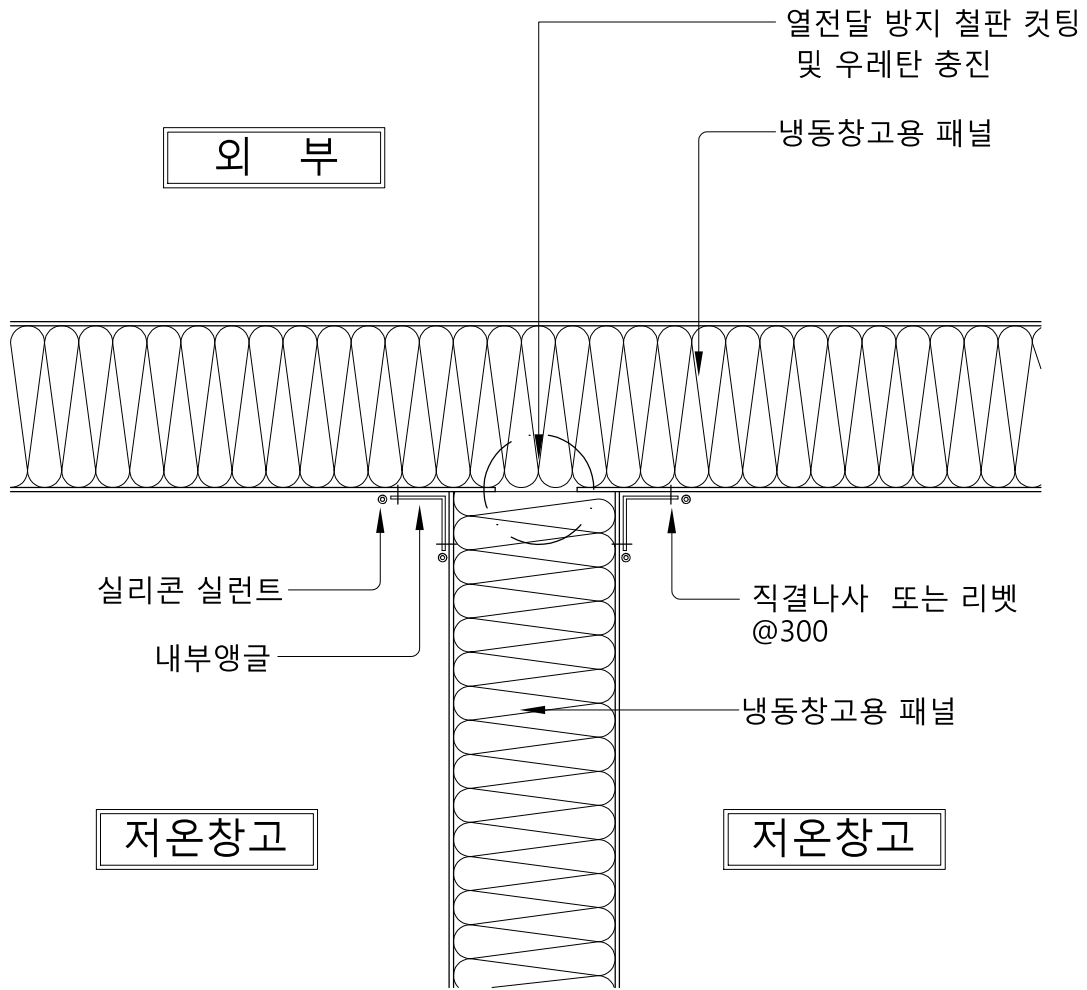


AL앵글(1.2T 또는 1.5T)

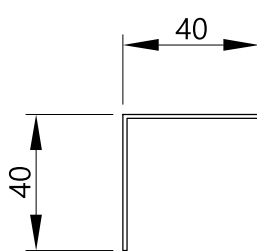




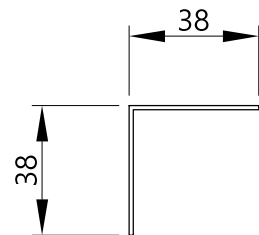
# 냉동패널 중간벽 & 천정 상세도



C/S내부앵글 0.5T 이상

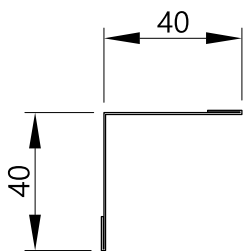
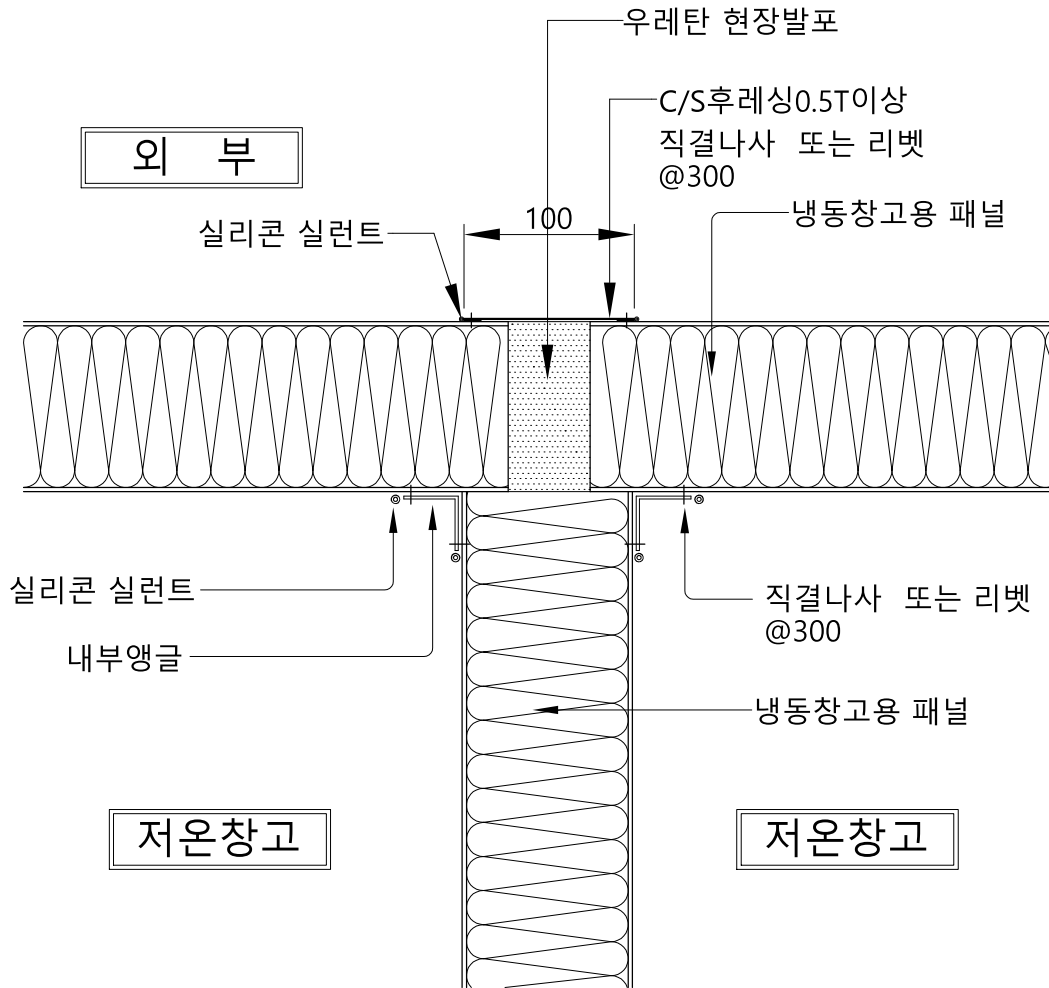


1.0T 이상(스틸도장, 아연도금,STS)

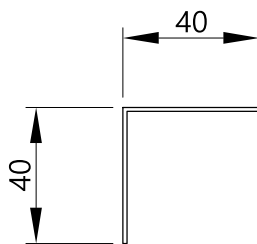


AL앵글(1.2T 또는 1.5T)

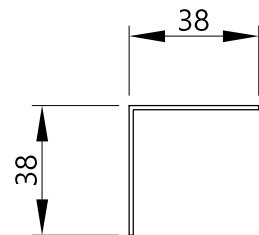
# 냉동패널 천정 & 내벽 상세도



C/S내부앵글 0.5T 이상

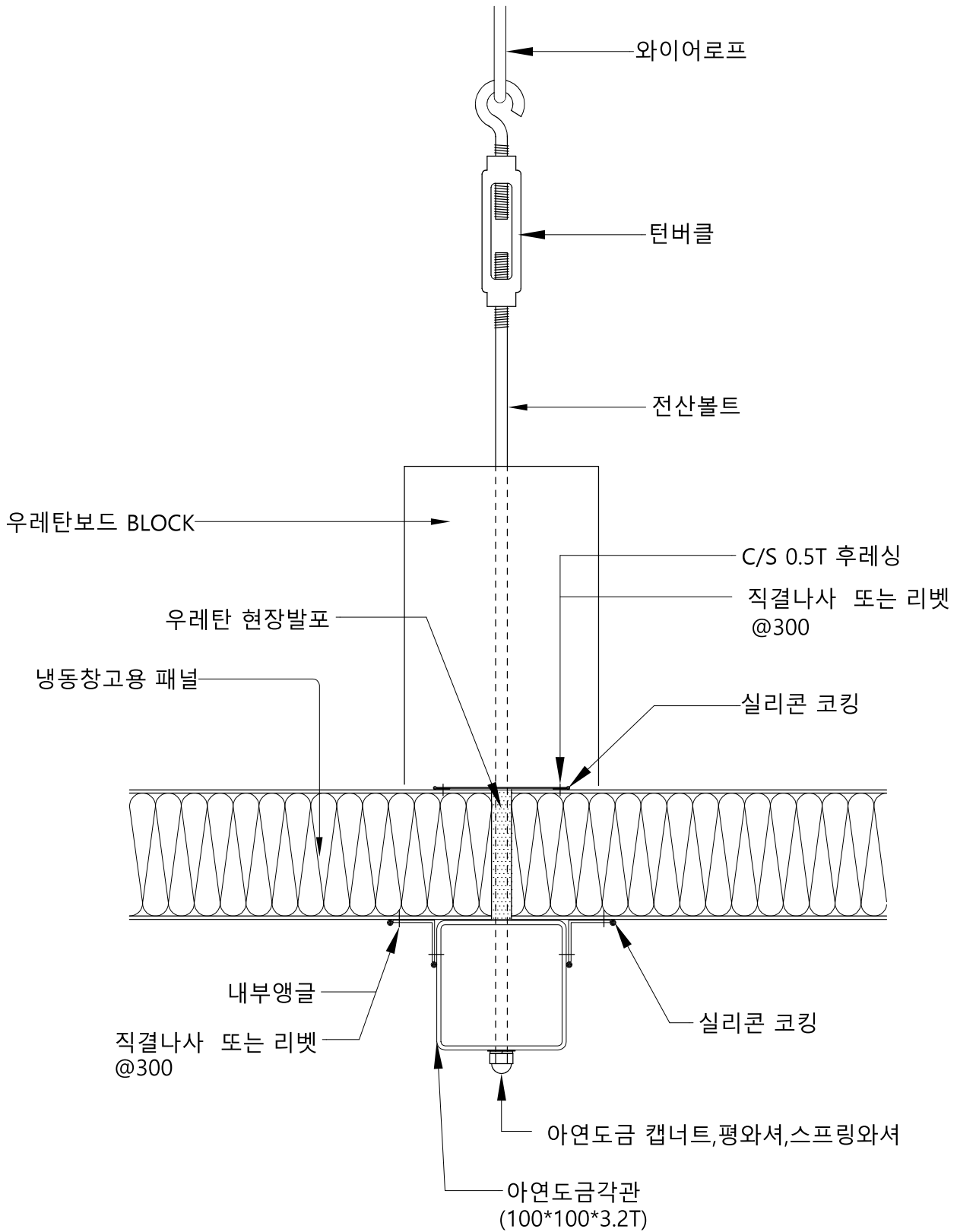


1.0T 이상(스틸도장, 아연도금,STS)



AL앵글(1.2T 또는 1.5T)

# 냉동패널 천정연결부 행킹 상세도(1)



## 냉동패널 천정 행킹 상세도(2)

